

COMMUNITY NOTICE



Installation of Safety Camera Equipment

OC Public Works will be installing a small camera at key locations to quickly monitor road and flood channel conditions during storm events.

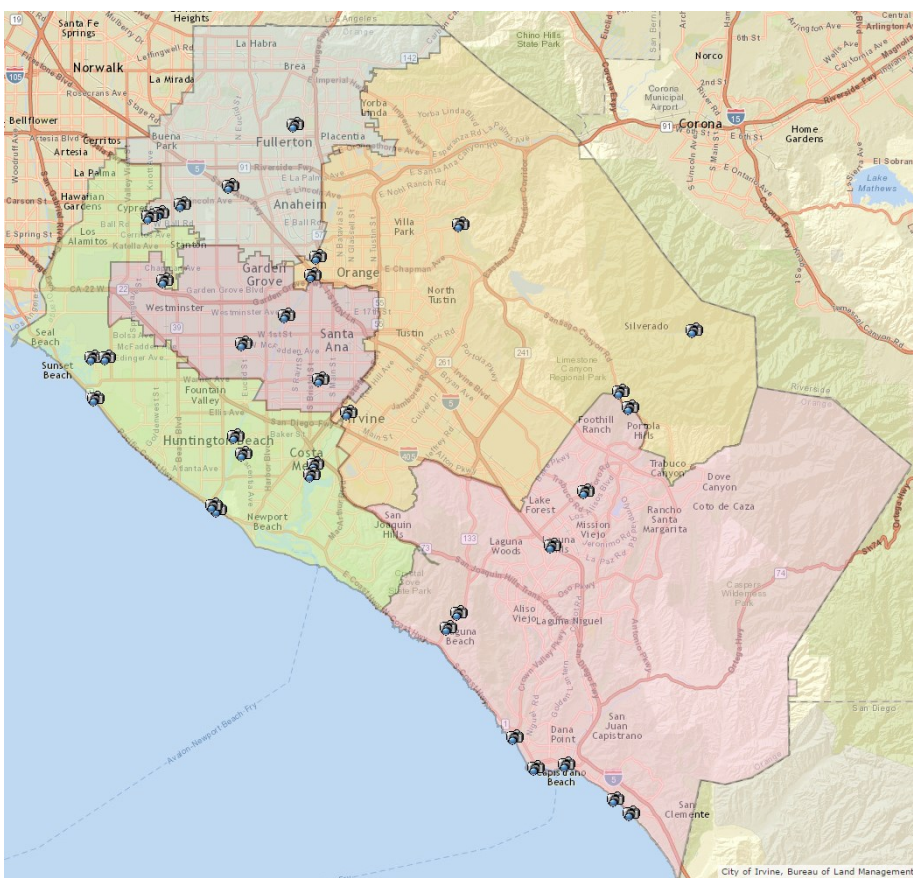


? WHAT: OC Public Works will be installing a small camera at key locations to quickly monitor road and flood channel conditions during storm events. The small camera, which will be positioned to view only road & flood channels, will enable County personnel to periodically view real-time conditions when needed to keep that area clear of blockages and flooding. **Note: The camera will only be monitored by assigned OC Public Works personnel and will enable the County to mobilize crews and equipment to address any issues that may arise.**

WHEN: Installation beginning **September 12, 2016** and continuing through October 2016

Work Days/ Hours:
Monday through
Friday 7 a.m. to 3 p.m.

WHERE Various locations throughout Orange County. (See map)



CONTACT INFORMATION:

Shannon Widor
OC Public Works
Shannon.Widor@ocpw.ocgov.com
714.667.9759



www.ocpublicworks.com

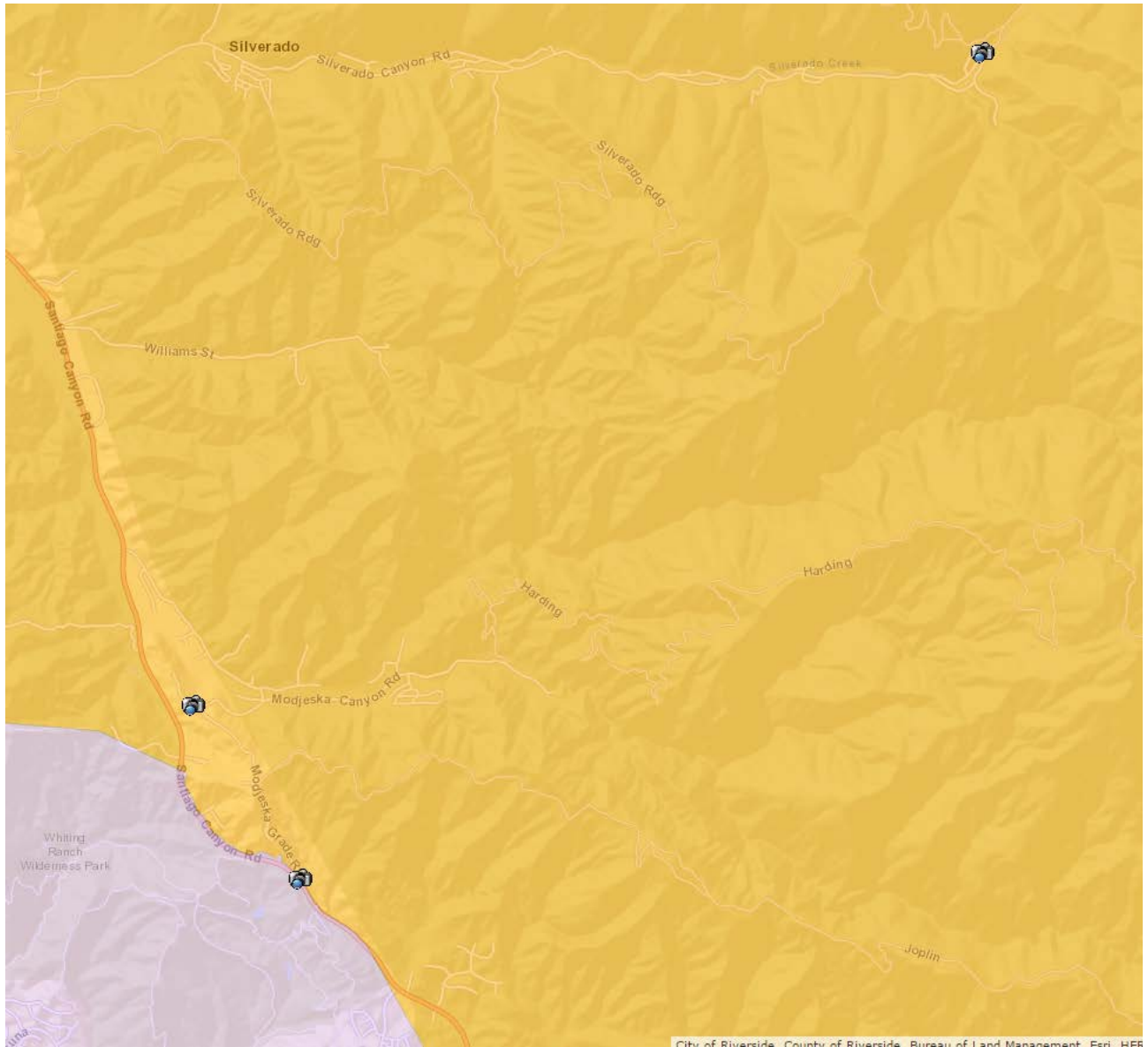


www.facebook.com/ocpublicworks

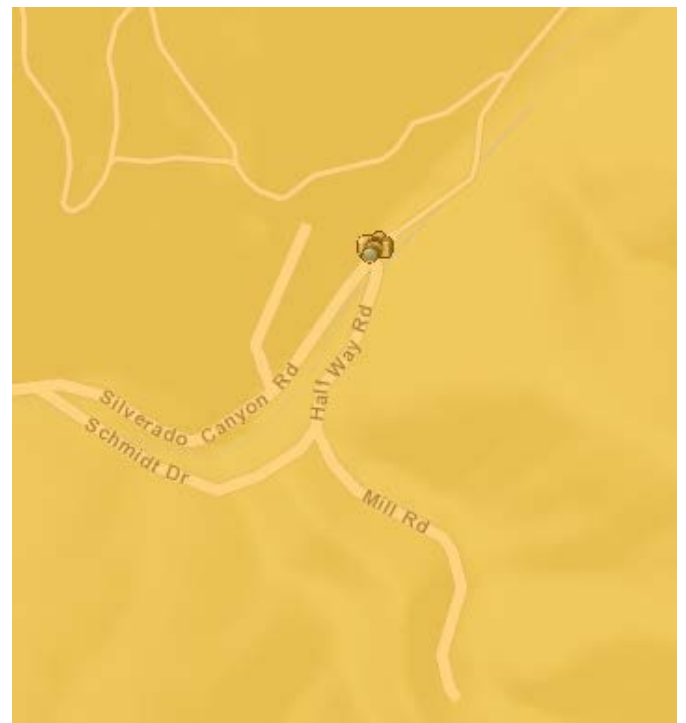
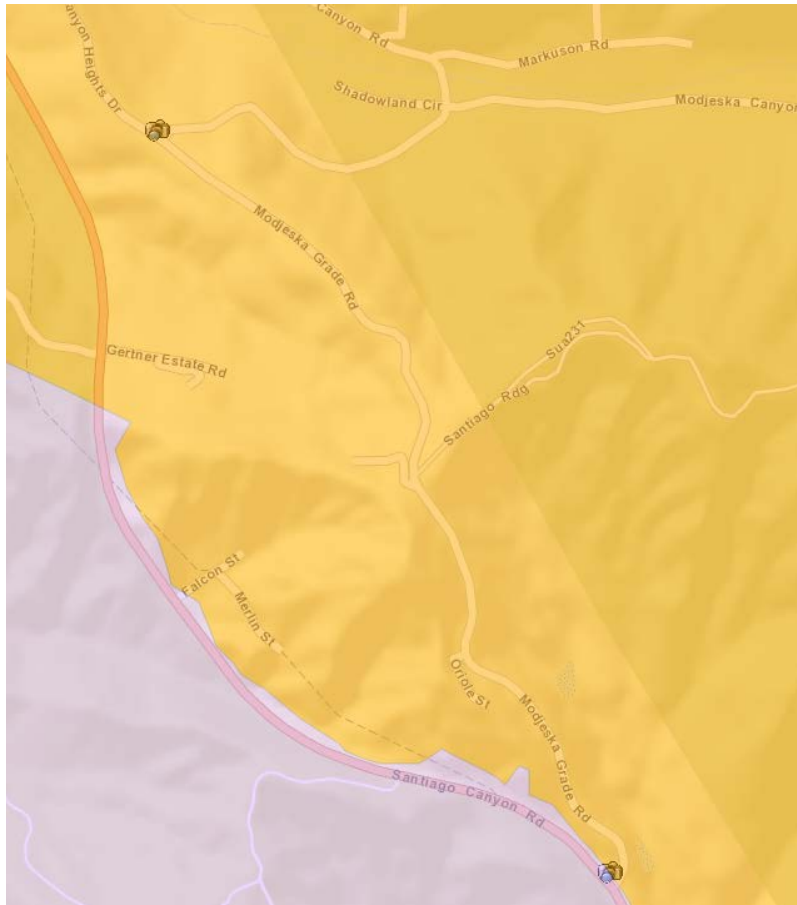


www.twitter.com/ocpublicworks

Camera Locations



Camera Locations (Closer Look)



Example of Camera

